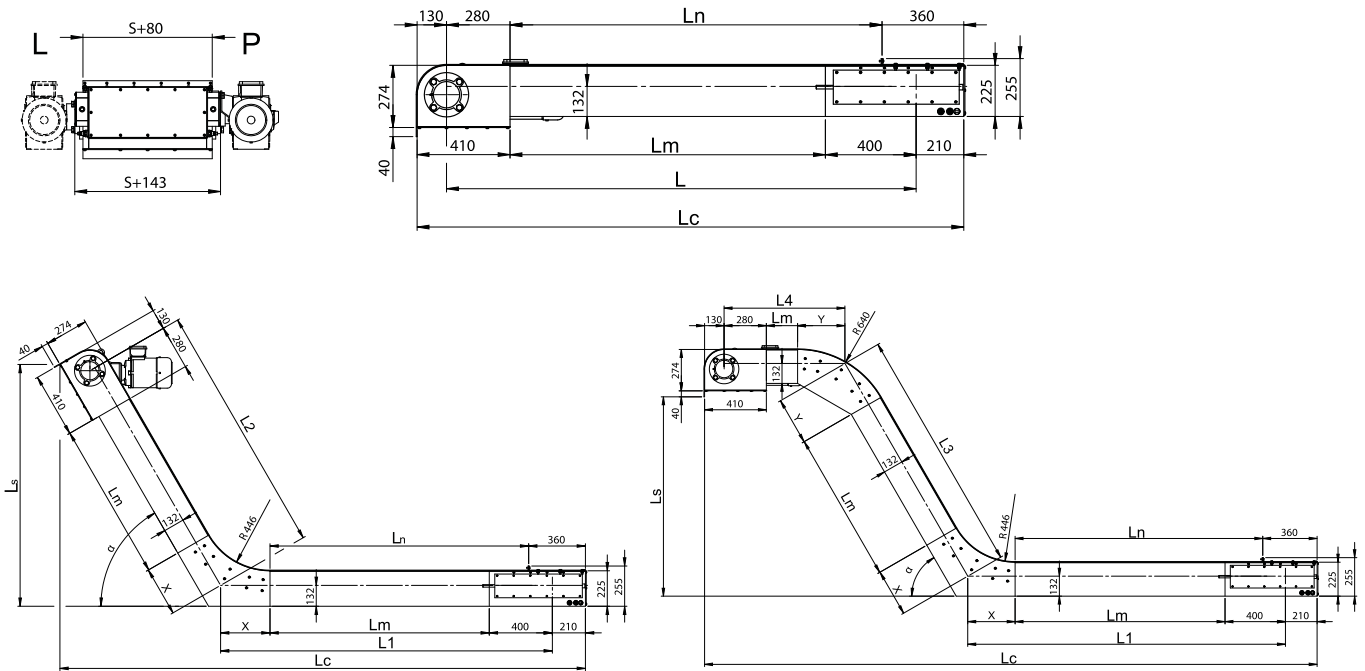




This type of magnetic conveyor is suitable for conveying of bulk loads, scrap from large stamping facilities and for transport of large amounts of ferrous magnetic material.



DIMENSIONS DM 225

WIDTH OF WORKING LOAD AREA	S	mm	150 / 200 / 300 / 400 / 500 / 600 / 700 / 800
WIDTH OF THE CONVEYOR	S+80	mm	230 / 280 / 380 / 480 / 580 / 680 / 780 / 880
WIDTH OF THE CONVEYOR WITH THE EXTERNAL TENSIONING DEVICE	S+143	mm	293 / 343 / 443 / 543 / 643 / 743 / 843 / 943
LENGTH	Lm	mm	OPTIONAL
AXIAL LENGTH	L	mm	680 + Lm
AXIAL LENGTH	L1	mm	400 + Lm + X
AXIAL LENGTH	L2	mm	280 + Lm + X
AXIAL LENGTH	L3	mm	Lm + X + Y
AXIAL LENGTH	L4	mm	280 + Lm + Y
AXIAL LENGTH OF CORNER UNIT	X	mm	$545 \cdot \text{tg } \alpha / 2$
AXIAL LENGTH OF CORNER UNIT	Y	mm	$545 \cdot \text{tg } \alpha / 2$
PITCH OF THE MAGNETIC RAILS	t	"	25 / 30 / 35 / 40
MOTOR INPUT	P	kW	0,75 / 1,1 / 1,5 / 2 / 2,2
SPEED OF CONVEYED MATERIAL	v	m/min	6 / 12 / 18
MAXIMAL LENGTH	ΣL	mm	$L + L1 + L2 + L3 + L4 < 15000$
REPOSE ANGLE	α	°	15 / 30 / 45 / 60 / 75 / 90