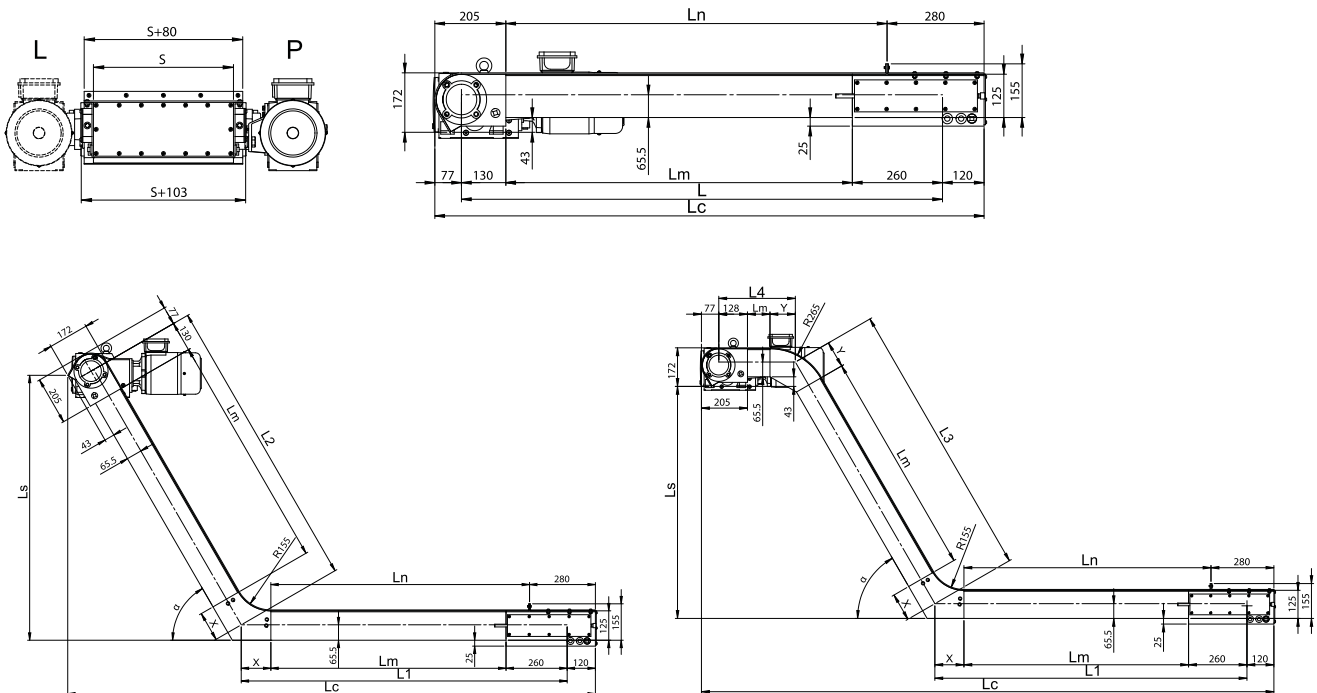




This type of magnetic conveyor is mainly used in gear cutting industry where the technology of the cutting or sawing of ferrous magnetic materials is applied. It is designed to convey medium large chips, stamping scrap, bolts, nails etc.



### DIMENSIONS DM 125

WIDTH OF WORKING LOAD AREA	S	mm	150 / 200 / 300 / 400 / 500 / 600
WIDTH OF THE CONVEYOR	S+80	mm	230 / 280 / 380 / 480 / 580 / 680
WIDTH OF THE CONVEYOR WITH THE EXTERNAL TENSIONING DEVICE	S+103	mm	353 / 353 / 453 / 553 / 653 / 753
LENGTH	Lm	mm	OPTIONAL
AXIAL LENGTH	L	mm	390 + Lm
AXIAL LENGTH	L1	mm	260 + Lm + X
AXIAL LENGTH	L2	mm	130 + Lm + X
AXIAL LENGTH	L3	mm	Lm + X + Y
AXIAL LENGTH	L4	mm	130 + Lm + Y
AXIAL LENGTH OF CORNER UNIT	X	mm	210.tg $\alpha/2$
AXIAL LENGTH OF CORNER UNIT	Y	mm	210.tg $\alpha/2$
PITCH OF THE MAGNETIC RAILS	t	"	10 / 15 / 20 / 30
MOTOR INPUT	P	kW	0,25 / 0,37 / 0,55 / 0,75 / 1,1 / 1,5
SPEED OF CONVEYED MATERIAL	v	m/min	3 / 6 / 12
MAXIMAL LENGTH	$\Sigma L$	mm	L + L1 + L2 + L3 + L4 < 10000
REPOSE ANGLE	$\alpha$	°	15 / 30 / 45 / 60 / 75 / 90